

Owner's Manual & Safety Instructions

Save This Manual Keep this manual for the safety warnings and precautions, assembly, operating, inspection, maintenance and cleaning procedures. Write the product's serial number in the back of the manual near the assembly diagram (or month and year of purchase if product has no number). Keep this manual and the receipt in a safe and dry place for future reference.

REV 16k

PITTSBURGH MOTORCYCLE

63397

1500 Lb. Capacity ATV/Motorcycle Lift



Visit our website at: <http://www.harborfreight.com>
Email our technical support at: productsupport@harborfreight.com

When unpacking, make sure that the product is intact and undamaged. If any parts are missing or broken, please call 1-888-866-5797 as soon as possible.

Copyright© 2016 by Harbor Freight Tools®. All rights reserved.
No portion of this manual or any artwork contained herein may be reproduced in any shape or form without the express written consent of Harbor Freight Tools. Diagrams within this manual may not be drawn proportionally. Due to continuing improvements, actual product may differ slightly from the product described herein. Tools required for assembly and service may not be included.

⚠ WARNING





**Read this material before using this product.
Failure to do so can result in serious injury.
SAVE THIS MANUAL.**

Table of Contents

Important Safety Information	2	Cleaning, Maintenance, and Lubrication	8
Specifications	3	Troubleshooting	9
Setup – Before Use	4	Parts List and Diagram	10
Operation	6	Warranty	12

PITTSBURGH[®] MOTORCYCLE

WARNING SYMBOLS AND DEFINITIONS

	This is the safety alert symbol. It is used to alert you to potential personal injury hazards. Obey all safety messages that follow this symbol to avoid possible injury or death.
 DANGER	Indicates a hazardous situation which, if not avoided, will result in death or serious injury.
 WARNING	Indicates a hazardous situation which, if not avoided, could result in death or serious injury.
 CAUTION	Indicates a hazardous situation which, if not avoided, could result in minor or moderate injury.
NOTICE CAUTION	Addresses practices not related to personal injury.

IMPORTANT SAFETY INFORMATION

Failure to heed these markings may result in personal injury and/or property damage:

1. Study, understand, and follow all instructions before operating this device.
2. Do not exceed 1500 lb. rated capacity.
3. Use only on hard, level surfaces.
4. Load saddle equally.
5. Lifting device only. Immediately after lifting, support the vehicle with appropriate means.
6. Do not adjust safety valve.
7. Wear ANSI-approved safety goggles and heavy-duty work gloves during use.
8. Keep clear of load while lifting and lowering.
9. Lower load slowly.
10. Do not use for aircraft purposes.
11. Lift vehicle only at manufacturer-recommended locations.
12. Inspect before every use; do not use if parts are loose or damaged.
13. Secure load with appropriate restraint device.
14. Immediately after lifting load, ensure that Lift's mechanical load holding means is engaged.
15. Do not move or dolly the vehicle while on the Lift.
16. No alterations shall be made to this product.
17. Keep hands away from the Lift Arm (9) when raising or lowering the Lift.

18. Stay alert. Watch what you are doing, and use common sense when operating a Lift. Do not use Lift while tired or under the influence of drugs, alcohol, or medication. A moment of inattention while operating lifts may result in serious personal injury.
19. Never allow anyone to ride Lift when it is being raised, lowered, or while holding a vehicle.
20. Before use, read manufacturer's instruction manual for the vehicle being lifted.
21. Store an idle Lift out of reach of children and other untrained persons. Lifts are dangerous in the hands of untrained users.
22. Lift service must be performed only by qualified repair personnel. Service or maintenance performed by unqualified personnel could result in a risk of injury.
23. When servicing the Lift, use only identical replacement parts. Follow instructions in the "Maintenance and Servicing" section of this manual. Use of unauthorized parts or failure to follow maintenance instructions may create a risk of injury.
24. Maintain labels and nameplates on the Lift. These carry important information. If unreadable or missing, contact Harbor Freight Tools for a replacement.
25. The warnings, precautions, and instructions discussed in this manual cannot cover all possible conditions and situations that may occur. The operator must understand that common sense and caution are factors, which cannot be built into this product, but must be supplied by the operator.
26. **WARNING:** The brass components of this product contain lead, a chemical known to the State of California to cause cancer and birth defects or other reproductive harm. (California Health & Safety Code § 25249.5, *et seq.*)



SAVE THESE INSTRUCTIONS.

Specifications

Minimum saddle height	3-5/8"
Maximum saddle height	17"
Weight capacity	1500 lb. (dead weight, evenly distributed)

Setup – Before Use



Read the **ENTIRE IMPORTANT SAFETY INFORMATION** section at the beginning of this manual including all text under subheadings therein before set up or use of this product.

Note: For additional information regarding the parts listed in the following pages, refer to “**Parts List and Diagram**” on page 10.

Components

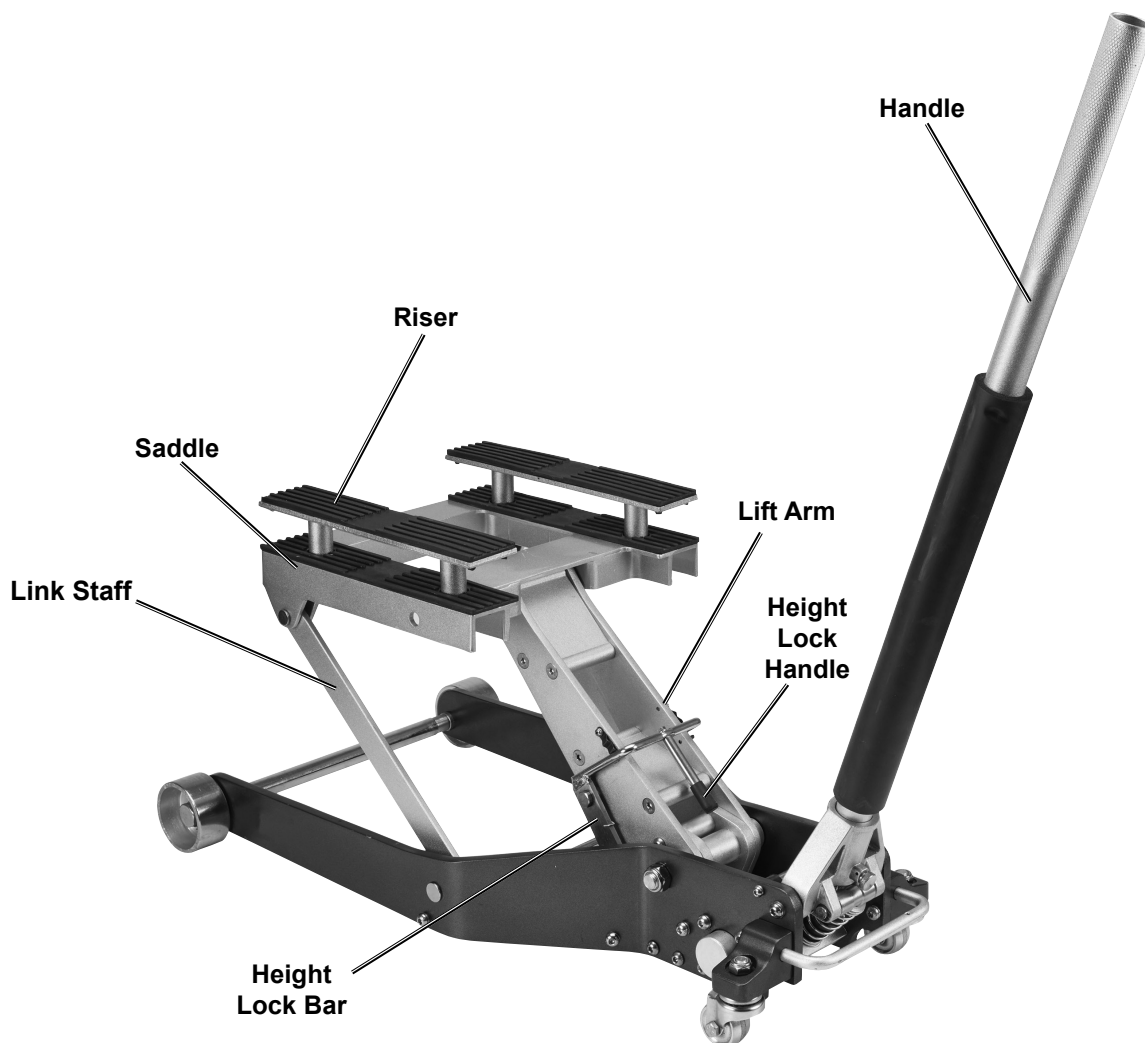


Figure A

Lift Setup

1. Loosen the Handle Set Screw (48) located on Handle Socket (50) (turn counterclockwise). Insert the Handle (51) into the Handle Socket. **See Figure B: Handle Set-up.**
2. Tighten the Handle Set Screw (turn clockwise) securely.

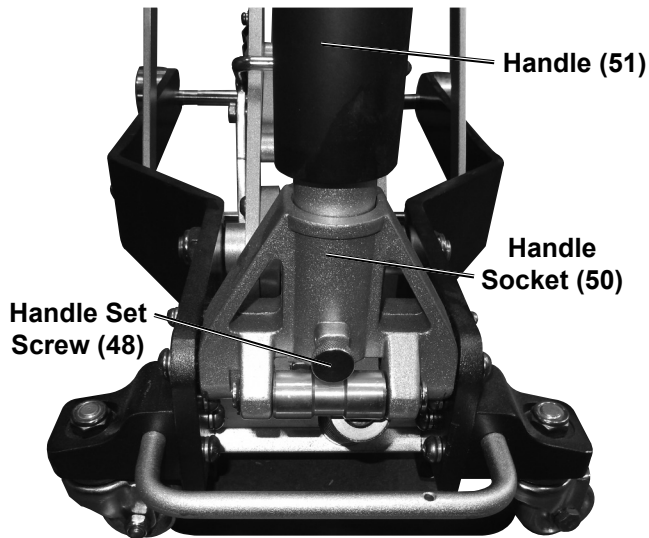


Figure B: Handle Set-up

Bleeding

IMPORTANT! Before first use, check for proper hydraulic oil level in the Hydraulic Power Unit (36). Thoroughly test the Lift for proper operation prior to its actual use. If the Lift appears not to be working properly, it may be necessary to bleed its hydraulic system of excess air.

1. Turn the Handle (51) counterclockwise to open the Release Valve.
2. Pump the Handle quickly several times to purge air from the system.

3. Turn the Handle clockwise to close the Release Valve.
4. Test the Lift several times for proper operation before attempting to lift a load. If, after bleeding, the Lift still does not appear to be working properly, do not use the Lift until it has been repaired by a qualified service technician.

Adding Oil

1. Remove the Oil Fill Screw on the top of the Hydraulic Power Unit (36). **See Figure C: Oil Fill Screw.**

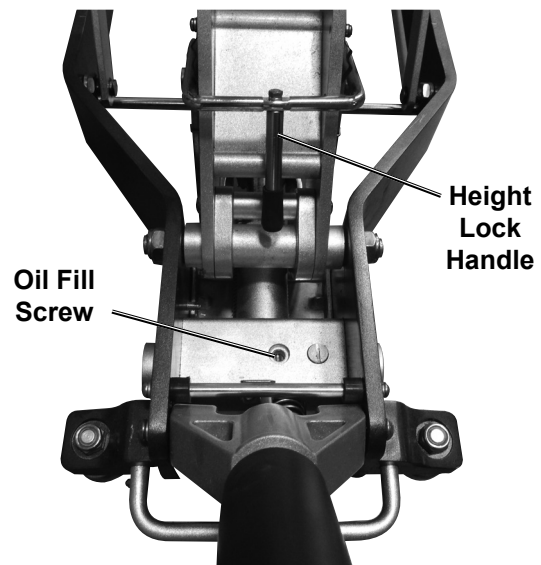


Figure C: Oil Fill Screw

2. Add high grade hydraulic oil (sold separately) into the oil fill hole slowly until the oil reaches the bottom of the threads.
3. Replace the Oil Fill Screw.

⚠️WARNING

TO PREVENT SERIOUS INJURY: Do not work on the Lift, or leave it unattended if the Lock Bar is not in position. Keep clear of Lift Arms during operation.

Lifting

1. Use the Handle to roll the Lift into position. Lower the Lift by turning the Handle counterclockwise.
2. Roll the Lift under the load. (See vehicle owner's manual for recommended lift points.) Align the Saddle under the vehicle base frame.

WARNING! If the vehicle base frame cannot sit flatly on the Saddle, do not use this Lift. The vehicle could fall over.

3. Turn the Handle completely clockwise. Then pump the Handle up and down to raise the lift.
4. Continue to pump the Handle up and down until the Saddle just touches the load. Make sure the load is centered and balanced on the Saddle. If the load is not evenly distributed on the Saddle it may fall from the lift, causing serious injury.
5. Use tie-down straps (sold separately) to secure the load.

6. Continue to raise the Lift to the desired height. Install Risers before operating the lift when more lift is needed. Height Lock Bar will click into a supporting position. **See Figure D: Height Lock Bar.**

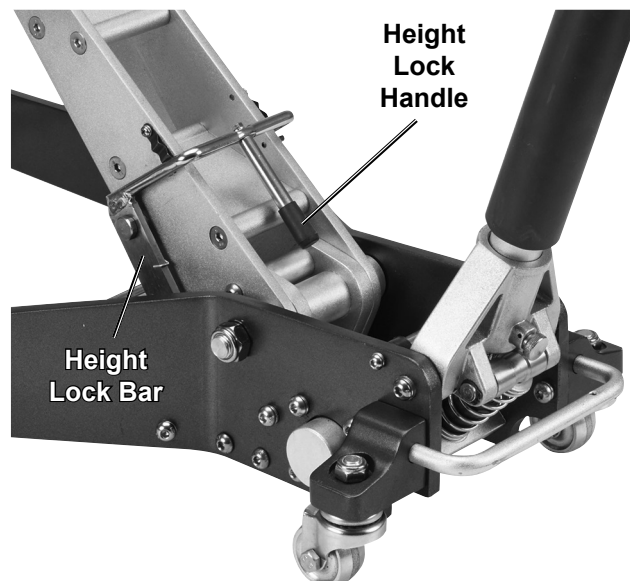


Figure D: Height Lock Bar

WARNING! Not engaging the Height Lock Bar may result in serious injury or death, and damage the Lift.

PITTSBURGH[®] MOTORCYCLE

Lowering

1. Carefully remove all tools, parts, etc. from under the lift.
2. First raise the Lift slightly by pumping the Handle to relieve pressure on the Height Lock Bar. Lift Height Lock Handle out of locked position.
3. Turn the Handle counterclockwise slowly in extremely small increments. Never allow the load to come down quickly or suddenly. Have another person balance the vehicle during this process.
4. Once the load is on the ground, remove the tie-down straps. Roll the Lift out from under the load.
5. Clean external surfaces of the Lift with a clean, dry cloth. Turn the Handle completely counterclockwise. Store the Lift in a dry, indoor area out of reach of children.

SAFETY

SETUP

OPERATION

MAINTENANCE

PITTSBURGH[®] **MOTORCYCLE**

Cleaning, Maintenance, and Lubrication



Procedures not specifically explained in this manual must be performed only by a qualified technician.

WARNING

TO PREVENT SERIOUS INJURY FROM TOOL FAILURE: Do not use damaged equipment. If abnormal noise or vibration occurs, have the problem corrected before further use.

1. Before each use, inspect the general condition of the Lift. Check for broken, cracked, or bent parts, loose or missing parts, and any condition that may affect the proper operation of the product. If a problem occurs, have the problem corrected before further use. **Do not use damaged equipment.**
2. Before each use, thoroughly test the Lift for proper operation prior to its actual use. If the Lift appears not to be working properly, follow **Bleeding on page 5**.
3. Change the hydraulic oil at least once every three years:
 - a. With the Lift fully lowered, remove the Oil Fill Screw on the side of the Cylinder Assembly.
 - b. With assistance, place the Lift on its side to allow the old hydraulic oil to drain out of the jack's Oil Reservoir completely, and dispose of the old hydraulic oil in accordance with local regulations.
 - c. With the Lift upright, completely fill the jack's Oil Reservoir with a high quality hydraulic oil (sold separately) until the oil just begins to run out of the oil fill hole.
 - d. Reinstall the Oil Fill Screw.
4. Wipe dry with a clean cloth. Then, store the Lift in a safe, dry location out of reach of children and other non-authorized people.

Troubleshooting

⚠️WARNING

TO PREVENT SERIOUS INJURY: Use caution when troubleshooting a malfunctioning lift.

Stay well clear of the supported load. Completely resolve all problems before use.

If the solutions presented in the Troubleshooting guide do not solve the problem, have a qualified technician inspect and repair the Lift before use. **After the Lift is repaired: Test it carefully without a load by raising it and lowering it fully, checking for proper operation, BEFORE RETURNING THE LIFT TO OPERATION.**

DO NOT USE A DAMAGED OR MALFUNCTIONING LIFT!

POSSIBLE SYMPTOMS				PROBABLE SOLUTION (Make certain that the lift is not supporting a load while attempting a solution.)
Unit will not lift at its weight capacity	Saddle lowers under load	Saddle will not lift all the way	Oil leaking from filler plug	
X	X			Turn Handle completely clockwise.
				Turn Bleed Screw completely clockwise to close.
X		X		Jack may be low on oil. Check the oil level and refill or replace if needed.
				Bleed Air from the Cylinder Assembly (Hydraulic System).
			X	Unit may have too much hydraulic oil inside. Check fluid level and adjust if needed.

SAFETY

SETUP

OPERATION

MAINTENANCE

PLEASE READ THE FOLLOWING CAREFULLY

THE MANUFACTURER AND/OR DISTRIBUTOR HAS PROVIDED THE PARTS LIST AND ASSEMBLY DIAGRAM IN THIS MANUAL AS A REFERENCE TOOL ONLY. NEITHER THE MANUFACTURER OR DISTRIBUTOR MAKES ANY REPRESENTATION OR WARRANTY OF ANY KIND TO THE BUYER THAT HE OR SHE IS QUALIFIED TO MAKE ANY REPAIRS TO THE PRODUCT, OR THAT HE OR SHE IS QUALIFIED TO REPLACE ANY PARTS OF THE PRODUCT. IN FACT, THE MANUFACTURER AND/OR DISTRIBUTOR EXPRESSLY STATES THAT ALL REPAIRS AND PARTS REPLACEMENTS SHOULD BE UNDERTAKEN BY CERTIFIED AND LICENSED TECHNICIANS, AND NOT BY THE BUYER. THE BUYER ASSUMES ALL RISK AND LIABILITY ARISING OUT OF HIS OR HER REPAIRS TO THE ORIGINAL PRODUCT OR REPLACEMENT PARTS THERETO, OR ARISING OUT OF HIS OR HER INSTALLATION OF REPLACEMENT PARTS THERETO.

Parts List

Part	Description	Qty
1	Bolt	2
2	Washer 18	2
3	Bushing	2
4	Front Wheel	2
5	Side Plate	2
6	Front Wheel Axle	1
7	Radius Linkage	2
8	Handle Bumper	1
9	Lift Arm	1
10	Rod	1
11	Bolt 8X20	2
12	Pin	2
13	Linkage Axle	2
14	Spring Washer 13	4
15	Lifting Frame	1
16	Bolt	2
17	Height Lock Bar	1
18	Lock Spring	2
19	Lift Arm Axle	1
20	Lock Nut M16	2
21	Washer 6	2
22	Bolt M6x25	2
23	Nut M16	2
24	Washer 16	2
25	Bolt	2
26	Bolt M8x25	17
27	Spring Washer 8	17
28	Bolt 8X16	6

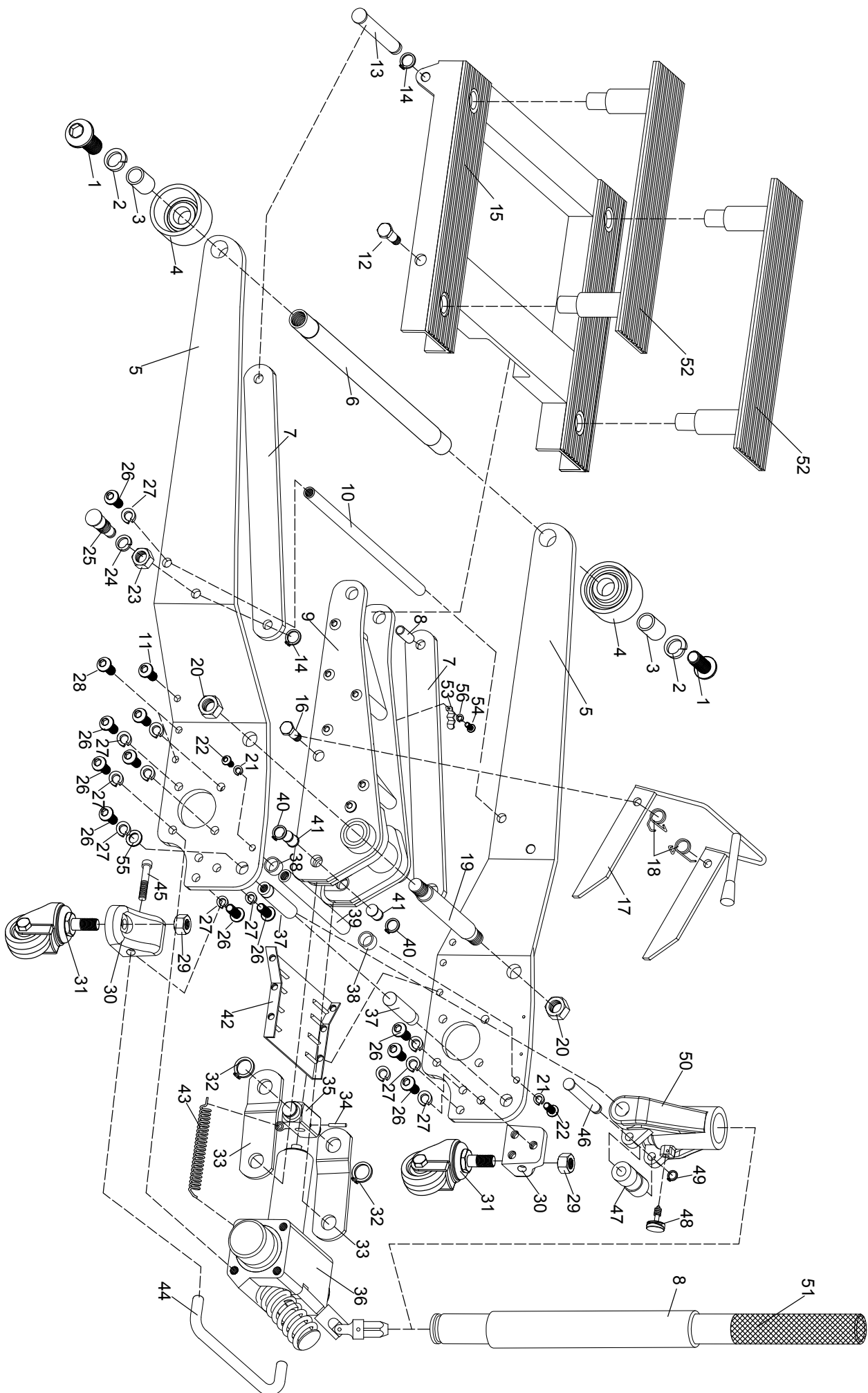
Part	Description	Qty
29	Lock Nut M12	2
30	Rear Caster Bracket	2
31	Rear Caster Assy	2
32	Washer 19	2
33	Short Linkage	2
34	Spring Pin 4X26	1
35	Rod	1
36	Hydraulic Power Unit	1
37	Pump Roller Axle	2
38	Rubber Guard	2
39	Rod	1
40	Washer 16	2
41	Linkage Axle Bolt	2
42	Ratchet Support Plate	1
43	Lift Arm Return Spring	2
44	Rear Handle	1
45	Bolt M8x35	2
46	Roller Rod	1
47	Roller	1
48	Handle Set Screw	1
49	Retaining Ring	1
50	Handle Socket	1
51	Handle	1
52	Risers	2
53	Retaining Ring	1
54	Bolt M5x10	2
55	Washer 8	2
56	Spring Washer 5	2

Record Product's Serial Number Here: _____

Note: If product has no serial number, record month and year of purchase instead.

Note: Some parts are listed and shown for illustration purposes only, and are not available individually as replacement parts.

Assembly Diagram



Limited 90 Day Warranty

Harbor Freight Tools Co. makes every effort to assure that its products meet high quality and durability standards, and warrants to the original purchaser that this product is free from defects in materials and workmanship for the period of 90 days from the date of purchase. This warranty does not apply to damage due directly or indirectly, to misuse, abuse, negligence or accidents, repairs or alterations outside our facilities, criminal activity, improper installation, normal wear and tear, or to lack of maintenance. We shall in no event be liable for death, injuries to persons or property, or for incidental, contingent, special or consequential damages arising from the use of our product. Some states do not allow the exclusion or limitation of incidental or consequential damages, so the above limitation of exclusion may not apply to you. THIS WARRANTY IS EXPRESSLY IN LIEU OF ALL OTHER WARRANTIES, EXPRESS OR IMPLIED, INCLUDING THE WARRANTIES OF MERCHANTABILITY AND FITNESS.

To take advantage of this warranty, the product or part must be returned to us with transportation charges prepaid. Proof of purchase date and an explanation of the complaint must accompany the merchandise. If our inspection verifies the defect, we will either repair or replace the product at our election or we may elect to refund the purchase price if we cannot readily and quickly provide you with a replacement. We will return repaired products at our expense, but if we determine there is no defect, or that the defect resulted from causes not within the scope of our warranty, then you must bear the cost of returning the product.

This warranty gives you specific legal rights and you may also have other rights which vary from state to state.

PITTSBURGH **MOTORCYCLE**

3491 Mission Oaks Blvd. • PO Box 6009 • Camarillo, CA 93011 • 1-888-866-5797